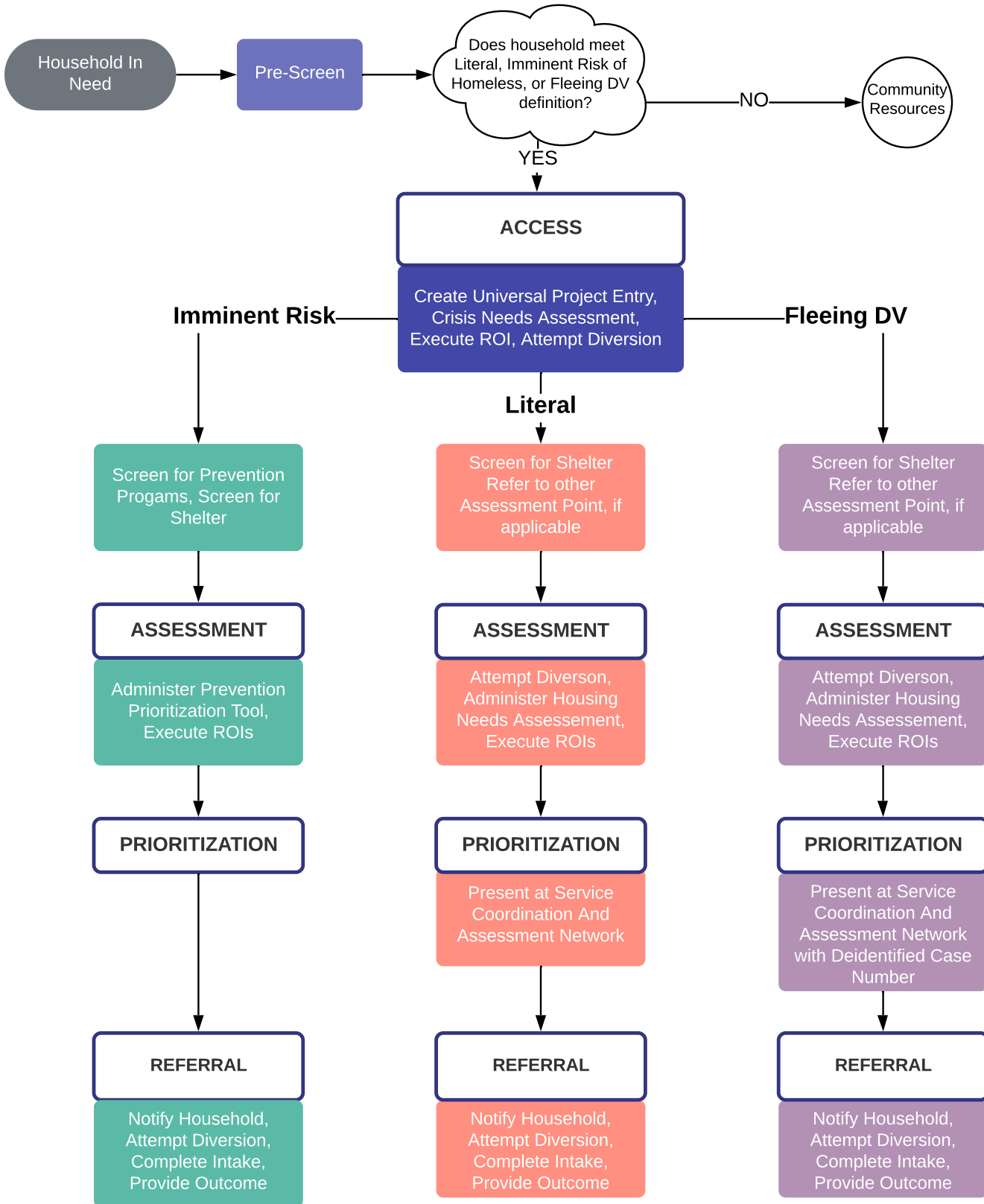


GVPHC Coordinated Entry System Flow Chart



Exit from Universal CES Project
Households may exit due to one of the following circumstances:

- Successful Diversion
- Household self-resolves
- Household enters a Permanent Housing Project (and moves into a unit)
- Household obtains housing outside of the CoC
 - Household leaves the CoC
- Household lost to contact over 45 days
- Episode of Homelessness is Broken
 - Deceased
- No Resources Available