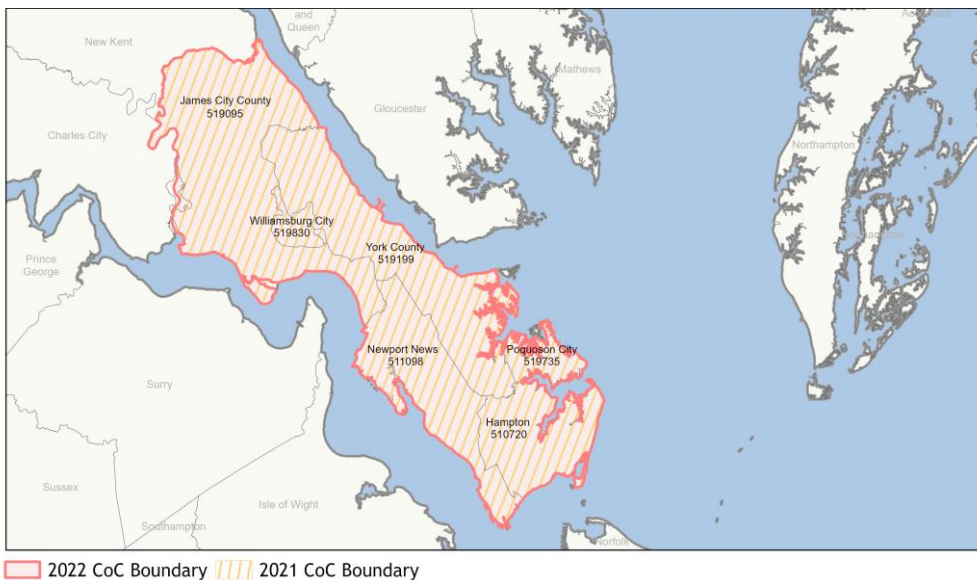
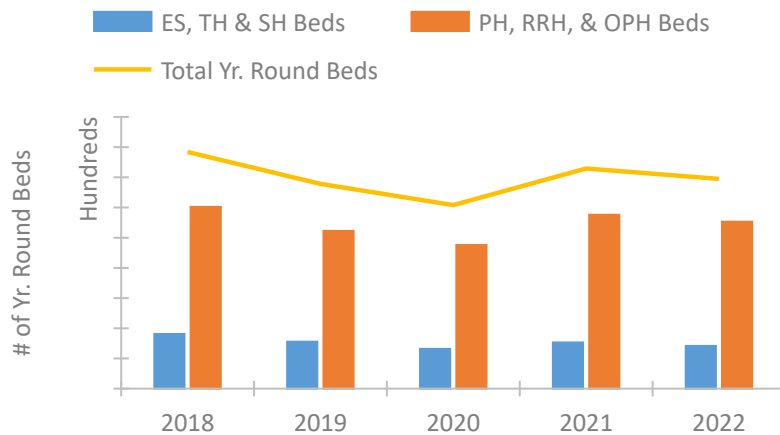


# CoC Performance Profile VA-505

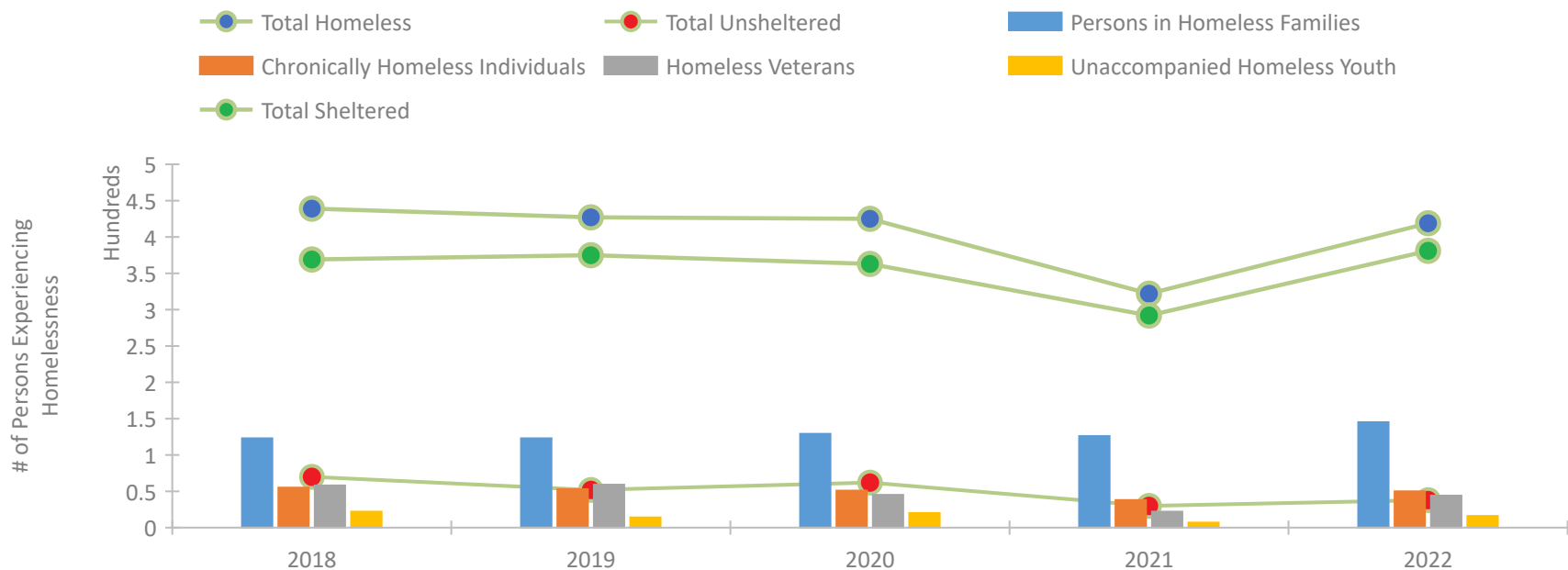
## Newport News, Hampton/Virginia Peninsula CoC



### Housing Inventory Count by Program Type



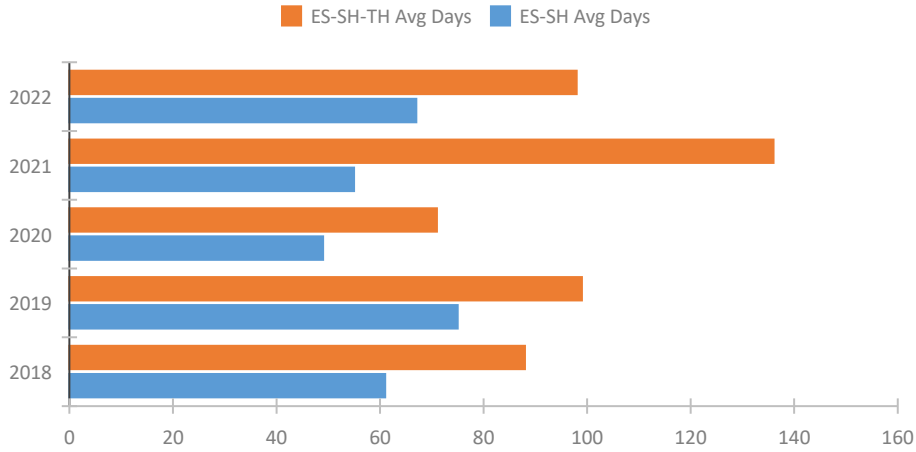
### Homeless Population – Point-in-Time (PIT) Count\*



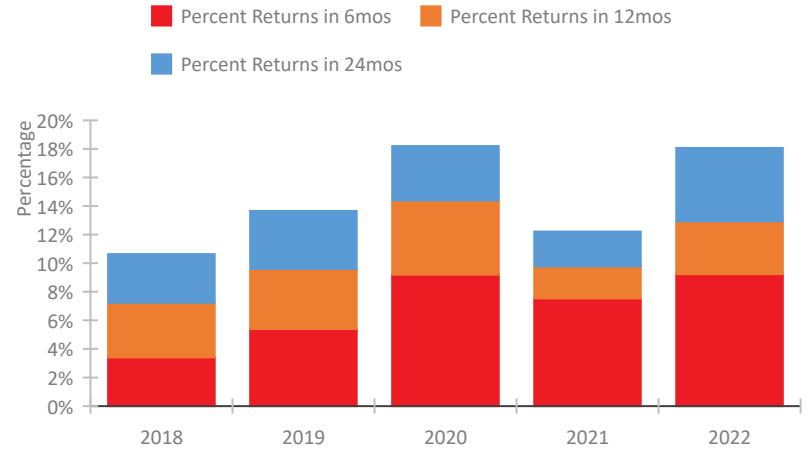
\*In 2021, HUD gave communities the option to cancel or modify the unsheltered survey portion of their counts based on the potential risk of COVID-19 transmission associated with conducting an in-person survey. As a result, HUD has excluded the unsheltered population sub-totals and all unsheltered sub-population data for this reporting period. The user is cautioned that the unsheltered and total homeless counts reported here may be missing data.

## CoC Performance Profile VA-505 Newport News, Hampton/Virginia Peninsula CoC

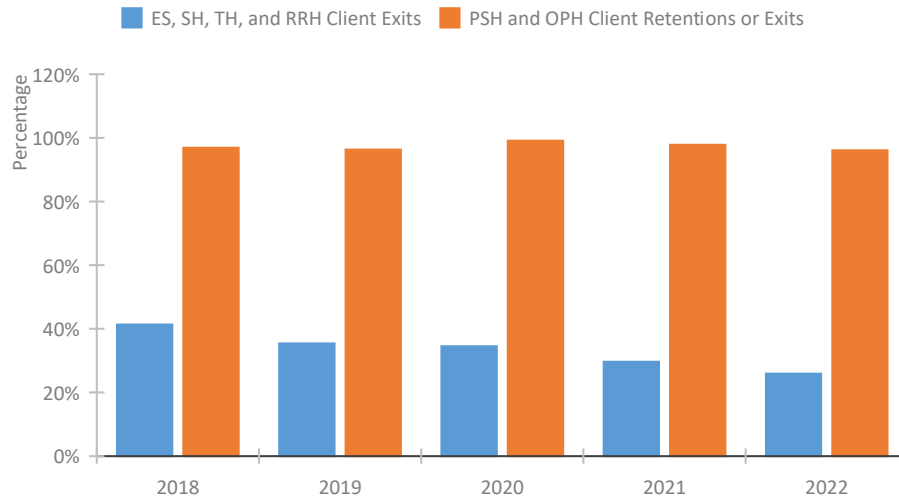
### Length of Time Homeless



### Returns to Homelessness Over Time



### Exits to Permanent Housing by Program Type



## Data Summary: VA-505 Newport News, Hampton/Virginia Peninsula CoC

### Point-In-Time Count Summary\*

	2018	2019	2020	2021	2022	2021-22 Change	% Change
Number of Sheltered Persons in Families	123	123	126	126	141	15	12%
Number of Unsheltered Persons in Families	0	0	3	--	4	--	--
Number of Sheltered Individuals	246	252	237	166	240	74	45%
Number of Unsheltered Individuals	70	52	59	--	34	--	--
<b>Total Homeless Persons</b>	<b>439</b>	<b>427</b>	<b>425</b>	<b>292</b>	<b>419</b>	<b>127</b>	<b>43%</b>
Number of Sheltered Families	41	39	37	35	50	15	43%
Number of Unsheltered Families	0	0	1	--	1	--	--
<b>Number of Total Families</b>	<b>41</b>	<b>39</b>	<b>38</b>	<b>35</b>	<b>51</b>	<b>16</b>	<b>46%</b>
Sheltered Chronically Homeless Individuals	42	41	43	38	46	8	21%
Unsheltered Chronically Homeless Individuals	13	12	8	--	4	--	--
<b>Total Chronically Homeless Individuals</b>	<b>55</b>	<b>53</b>	<b>51</b>	<b>38</b>	<b>50</b>	<b>12</b>	<b>32%</b>
Sheltered Veterans	52	54	37	22	42	20	91%
Unsheltered Veterans	6	5	8	--	2	--	--
<b>Total Veterans</b>	<b>58</b>	<b>59</b>	<b>45</b>	<b>22</b>	<b>44</b>	<b>22</b>	<b>100%</b>
Sheltered Unaccompanied Youth (up to 24)	18	11	16	7	14	7	100%
Unsheltered Unaccompanied Youth (up to 24)	4	3	4	--	2	--	--
<b>Total Unaccompanied Youth (up to 24)</b>	<b>22</b>	<b>14</b>	<b>20</b>	<b>7</b>	<b>16</b>	<b>9</b>	<b>129%</b>

### System Performance Measures Summary

	2018	2019	2020	2021	2022	2021-22 Change	% Change
Average Length of Time Homeless (days)	88	99	71	136	98	-38	-27.9%
Rate People Return to Homelessness in 6 Months	3.4%	5.4%	9.2%	7.5%	9.2%	1.7%	N/A
Number of People who are Homeless for the First Time	937	817	1,072	874	1,073	199	22.8%
Rate People Exit from ES, SH, TH, and RRH to PH	41.4%	35.4%	34.5%	29.7%	25.9%	-3.7%	N/A
Rate People in PSH and OPH Retain or Exit to PH	96.9%	96.3%	99.1%	97.8%	96.1%	-1.7%	N/A

### Housing Inventory Count Summary

	2018	2019	2020	2021	2022	2021-22 Change	% Change
Emergency Shelter (ES)	250	219	194	257	234	-23	-9%
Transitional Housing (TH)	113	92	70	49	49	0	0%
Permanent Supportive Housing (PSH)	850	800	714	920	839	-81	-9%
Rapid Re-Housing (RRH)	267	158	150	145	115	-30	-21%
Other Permanent Housing (OPH)	88	88	88	88	153	65	74%

### Award Summary

	2018	2019	2020	2021	2022	2021-22 Change	% Change
<b>Continuum of Care (CoC)</b>	\$2,014,410	\$1,912,704	\$1,957,101	\$2,007,588	\$2,009,060	\$1,472	0%
<b>ESG (VA state recipient - no direct funding)</b>	\$2,771,457	\$2,885,391	\$3,008,913	\$3,007,657	\$3,048,024	\$40,367	1%

\*In 2021, HUD gave communities the option to cancel or modify the unsheltered survey portion of their counts based on the potential risk of COVID-19 transmission associated with conducting an in-person survey. As a result, HUD has excluded the unsheltered population sub-totals and all unsheltered sub-population data for this reporting period. The user is cautioned that the unsheltered and total homeless counts reported here may be missing data.